



i7 Smart

Smart Tunable White and Dimming Switch
Module

Basic Information

Model no	<i>70E853TY</i>
Range	<i>i7 Smart</i>
Type	<i>Smart Dimming Switch</i>
Finishing	<i>white</i>

Product Information

Communication	<i>ZigBee</i>
Highlights	<i>Adjust cold & warm color temperature</i> <i>Adjust the brightness of space</i> <i>Wall control,APP control,voice control,timing</i> <i>Scenes and automation with other smart devices</i> <i>Compatible with Simon Smart light (smart KC1):</i>
Normal Voltage	<i>250V~50/60Hz</i>



Operational Voltage	176VAC-264VAC
Load	No load wires between switch and light

Installation and maintenance

IP protection	IP20
Material	PC (polycarbonate)
Operatingtemperaturerange	-10°C~40°C
Installationtype	wall mounted

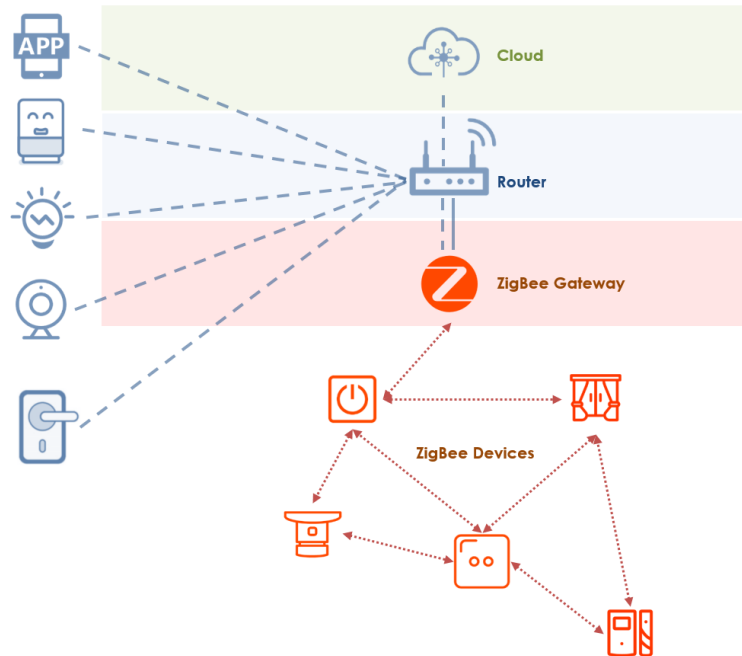
Additional information

Quantity per box	6
Boxsize(mm)	375*95*105
Quantity per carton	60
Carton size(mm)	495*385*220



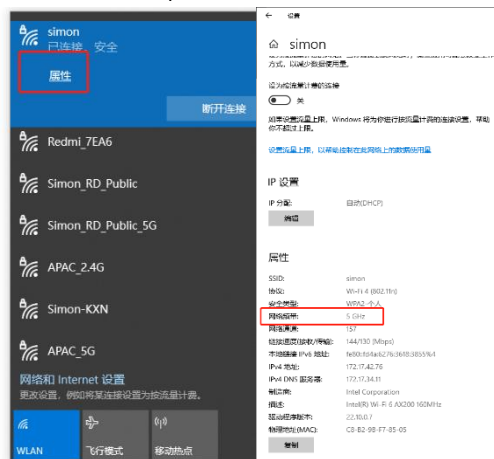
1 Network Environment

1.1 Basic Requirement for Network



Wi-Fi — Home Router

- Support 2.4GHz Wi-Fi, select 2.4GHz Wi-Fi signal
- 2.4G/5G combination Wi-Fi is not supported
- Can check the Wi-Fi type on the mobile phone or PC



ZigBee — Smart Gateway

- Need to be connected with home router via network cable or Wi-Fi
- Connect ZigBee devices to internet

Tips: Change network environment of Smart Gateway (LAN)

- Change the Wi-Fi password/ Wi-Fi Name: Smart Gateway (LAN) and ZigBee devices under the gateway will not be influenced, but Wi-Fi devices will be offline.
- Change the router: Smart Gateway (LAN) and ZigBee devices under the gateway will not be influenced, but Wi-Fi devices will be offline.

Change network environment of Smart Gateway (Wireless)

- Change the Wi-Fi password/ Wi-Fi Name: Smart Gateway (LAN), ZigBee devices under the gateway and Wi-Fi devices will be offline.
- Change the router: Smart Gateway (LAN), ZigBee devices under the gateway and Wi-Fi devices will be offline.

***In the Situation that smart gateway and ZigBee devices under the gateway are offline, long press the button on the gateway to reset it, and make network configuration of gateway again, then they can work normally.**
For offline Wi-Fi devices, need to reset them and make network configuration again.

1.2 Smart Gateway

The smart gateway is the control center of the ZigBee device.

Parameters:

Code	681808TY	S00E0-S008	S00E0-S009	55E761TY/ 70E761TY/ 58E8061TY/ 72E8061TY/ 30E8061TY	S00E0-S026 S00E0-S042
Communication	LAN/ZigBee		Wi-Fi/ZigBee		Wi-Fi/ZigBee
Power Supply	USB 5V/1A			220-240V ~50/60Hz	220-240V ~50/60Hz
Recommended Number of connecting devices	Max 100	Max 100	Max 50	Max 30	Max 100

5.5 I7/M3 Smart Tunable White and Dimming Switch (No load/ ZigBee control)

Code	Description
70E853TY	Smart Tunable Dimming Switch Module(i7)
58E8017TY	Smart Tunable Dimming Switch(M3)

Installation Environment:

- Only need to connect with L/N wire
- Compatible with Simon smart(ZigBee control) light like KC1
- ZigBee module can be controlled by APP or dimming switch

Wiring Diagram of Smart Tunable White and Dimming Switch (No load/ZigBee control)



Preparation for Use:

- Ensure that the smart gateway has been added.
- Mobile phone is connected to Internet (Wi-Fi or 3G/4G/5G)
- Ensure effective coverage of ZigBee network. (Communication distance between any ZigBee devices: <2 walls, <100m in open area)
- Ensure smart dimming switch and ZigBee module are under the same gateway

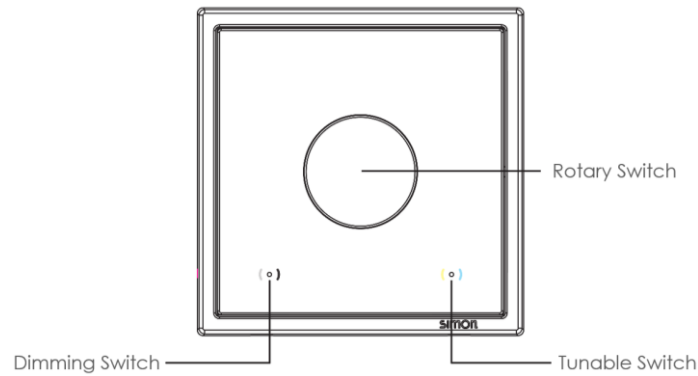
Network Configuration:

■ Dimming switch (step 1)

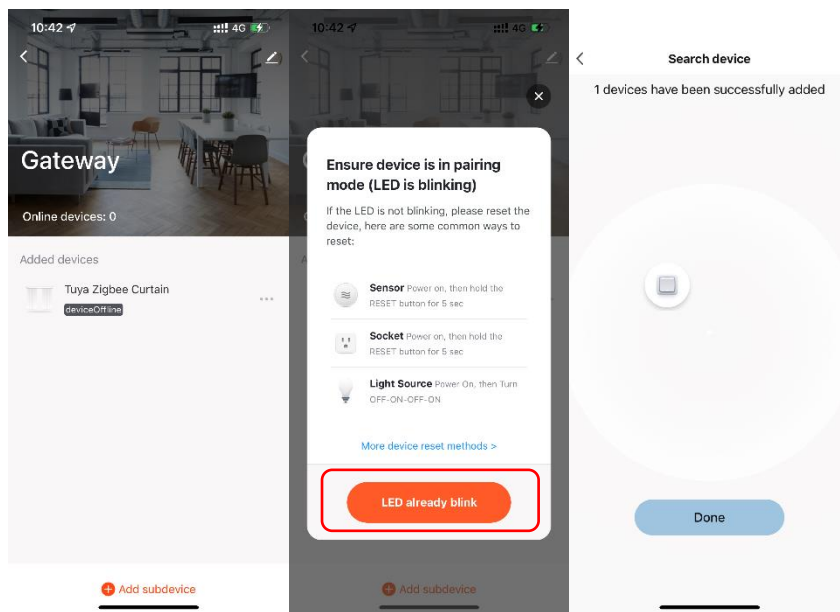
- Download and open Simon Smart APP



- Long press the rotary switch for more than 3s until the indicator of dimming switch flashes



- Enter the “Gateway” interface and click “Add Subdevice”
- Confirm that indicator is blinking, then click “LED already blink”
- Add the device as per the app prompts

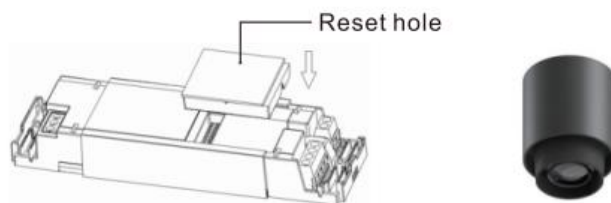


- After finishing the adding, find and enter the device interface

Network Configuration:

■ ZigBee module (step 2)

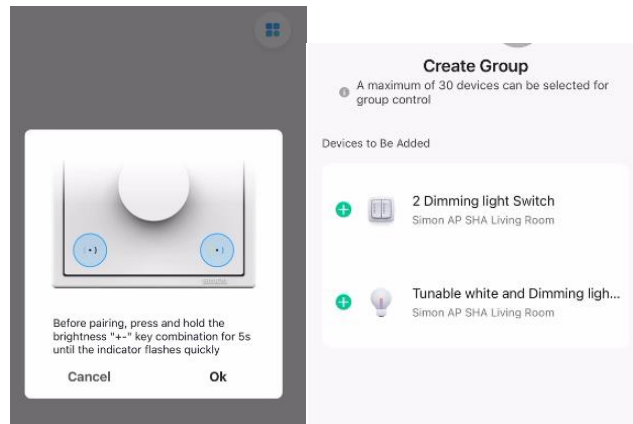
- Insert the pin into the reset hole on the ZigBee module for more than 5s to enter the pairing process
- Enter the “Gateway” interface and click “Add Subdevice”
- Confirm that indicator is blinking, then click “LED already blink”
- Add the device as per the app prompts



■ Pairing the smart switch with the ZigBee module (step 3)

Simon-Smart Installation Manual

- Enter the smart tunable white and dimming switch surface and click the top right button.
- Pairing the ZigBee module as per the app prompts



Configuration Indicator Status:

Waiting pairing	Left indicator, 4 quick flashes per second
Pairing success	Left indicator, 2 flashes per second for 2s
Pairing failure	Left indicator, 1 flash per second for 10s
Initial power on	Left and right indicators, ON for 3s
Connecting driver	Left and right indicators, flash alternately