



i7 smart

• 1 Gang Smart Scene Switch Module

Basic Information

Model no	70E842TY
Range	<i>i7 smart</i>
Type	<i>Smart Scene Switch</i>
Finishing	<i>White</i>

Product Information

Communication	<i>ZigBee</i>
Highlights	<i>Easy to set scenes and 2-way control by APP</i> <i>Wall control, APP control, voice control, timing</i> <i>Scenes and automation with other smart devices</i>
Normal Voltage	<i>250V~50/60Hz</i>
Operational Voltage	<i>176VAC-264VAC</i>
Load	<i>No load wires between switch and light</i>



Installation and maintenance

IP protection	<i>IP20</i>
Material	<i>PC (polycarbonate)</i>
Operatingtemperaturerange	<i>-10°C~40°C</i>
Installationtype	<i>wall mounted</i>

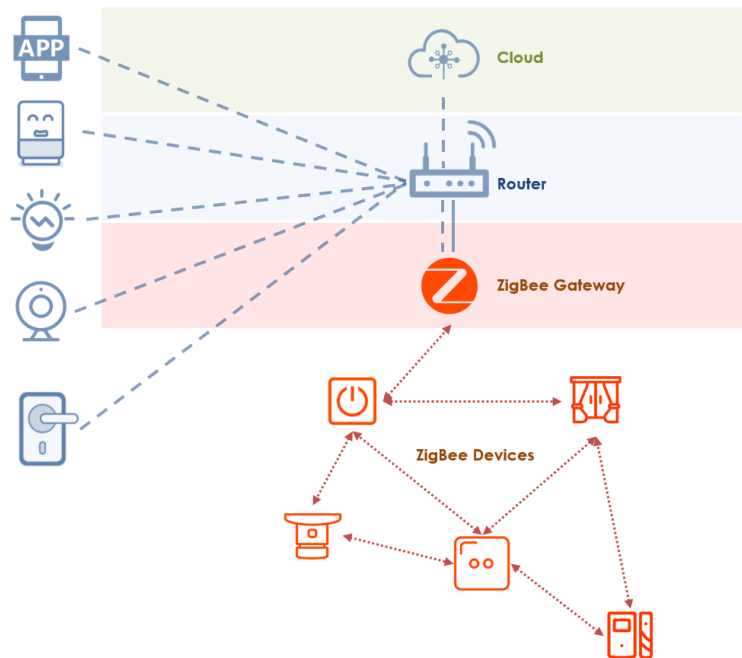
Additional information

Quantity per box	<i>8</i>
Boxsize(mm)	<i>375*95*105</i>
Quantity per carton	<i>80</i>
Carton size(mm)	<i>495*385*220</i>



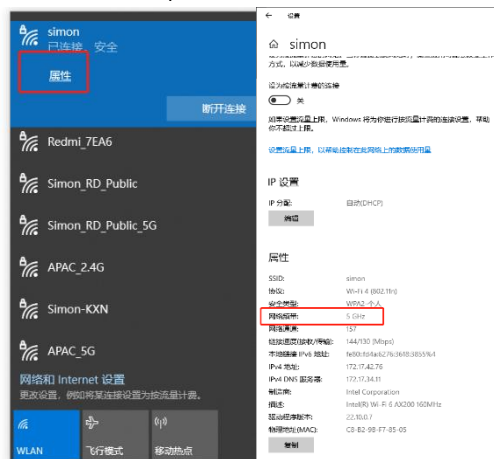
1 Network Environment

1.1 Basic Requirement for Network



Wi-Fi — Home Router

- Support 2.4GHz Wi-Fi, select 2.4GHz Wi-Fi signal
- 2.4G/5G combination Wi-Fi is not supported
- Can check the Wi-Fi type on the mobile phone or PC



ZigBee — Smart Gateway

- Need to be connected with home router via network cable or Wi-Fi
- Connect ZigBee devices to internet

Tips: Change network environment of Smart Gateway (LAN)

- Change the Wi-Fi password/ Wi-Fi Name: Smart Gateway (LAN) and ZigBee devices under the gateway will not be influenced, but Wi-Fi devices will be offline.
- Change the router: Smart Gateway (LAN) and ZigBee devices under the gateway will not be influenced, but Wi-Fi devices will be offline.

Change network environment of Smart Gateway (Wireless)

- Change the Wi-Fi password/ Wi-Fi Name: Smart Gateway (LAN), ZigBee devices under the gateway and Wi-Fi devices will be offline.
- Change the router: Smart Gateway (LAN), ZigBee devices under the gateway and Wi-Fi devices will be offline.

***In the Situation that smart gateway and ZigBee devices under the gateway are offline, long press the button on the gateway to reset it, and make network configuration of gateway again, then they can work normally.**
For offline Wi-Fi devices, need to reset them and make network configuration again.

1.2 Smart Gateway

The smart gateway is the control center of the ZigBee device.

Parameters:

Code	681808TY	S00E0-S008	S00E0-S009	55E761TY/ 70E761TY/ 58E8061TY/ 72E8061TY/ 30E8061TY	S00E0-S026 S00E0-S042
Communication	LAN/ZigBee		Wi-Fi/ZigBee		Wi-Fi/ZigBee
Power Supply	USB 5V/1A			220-240V ~50/60Hz	220-240V ~50/60Hz
Recommended Number of connecting devices	Max 100	Max 100	Max 50	Max 30	Max 100

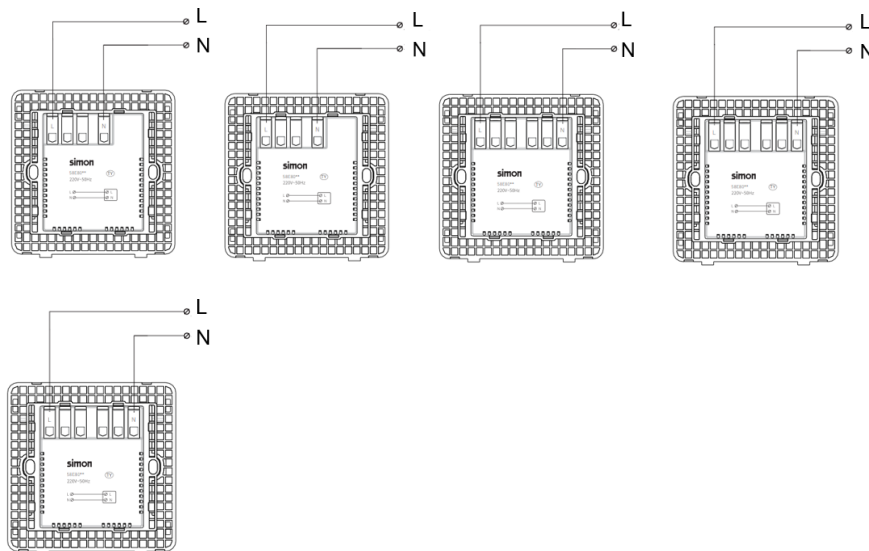
4 Smart Scene Switch

4.1 I7/M3/E3 Smart Scene Switch

Code	Description
70E842TY	1 Gang Smart Scene Switch Module
70E843TY	2 Gang Smart Scene Switch Module
70E844TY	3 Gang Smart Scene Switch Module
70E845TY	4 Gang Smart Scene Switch Module
58E8005TY	1 Gang Smart Scene Switch
58E8006TY	2 Gang Smart Scene Switch
58E8007TY	3 Gang Smart Scene Switch
58E8008TY	4 Gang Smart Scene Switch
58E8021TY	6 Gang Smart Scene Switch
30E805TY	1 Gang Smart Scene Switch
30E806TY	2 Gang Smart Scene Switch
30E807TY	3 Gang Smart Scene Switch
30E808TY	4 Gang Smart Scene Switch

Installation Environment:

- Only need to connect to L&N line in the mounting box, no need to connect lights(no load)



Preparation for Use:

- Ensure that the smart gateway has been added.
- Mobile phone is connected to Internet (Wi-Fi or 3G/4G/5G)
- Ensure effective coverage of ZigBee network. (Communication distance between any ZigBee devices: <2 walls, <100m in open area)

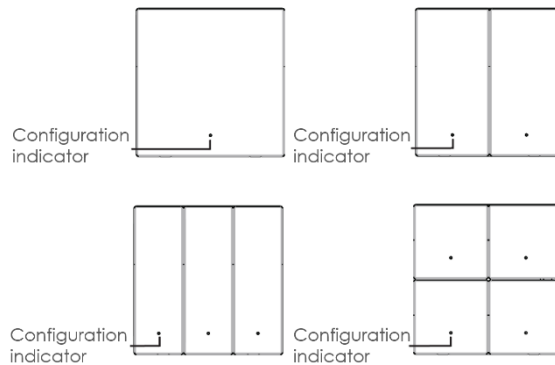
Simon-Smart Installation Manual

Network Configuration:

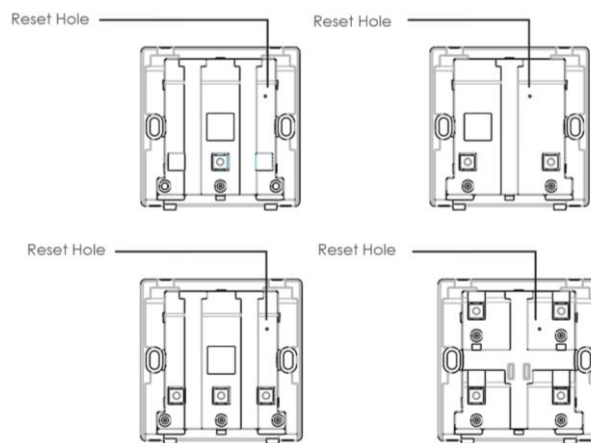
- Download and open Simon Smart APP



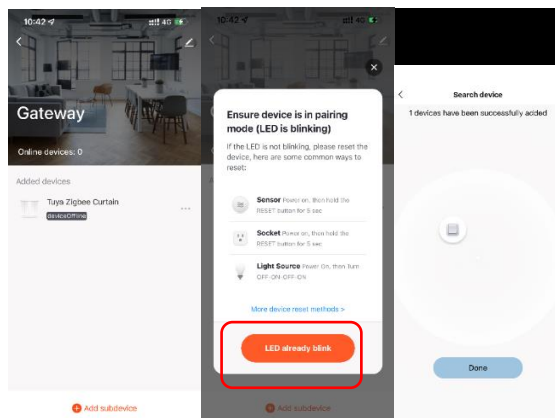
- After connecting the power, long press the left bottom button of switch until the configuration indicator flashes



- If not flashes or you want to reset, remove the cover and insert the pin into the reset hole until the configuration indicator flashes



- Open Simon Smart APP, enter the "Gateway" interface and click "Add Subdevice"
- Confirm that indicator is blinking, then click "LED already blink"
- Add the device as per the app prompts



Simon-Smart Installation Manual

Configuration Indicator Status:

Initial power on	ON for 1s
No pairing	4 flashes per second for 2s
No setting	2 flashes per second for 2s
Scenario mode	2 flashes per second for 2s
Multi-control mode	Short press to turn ON/OFF