



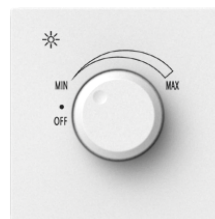
## Simon i7

I7 200W LED Dimmer Switch Module



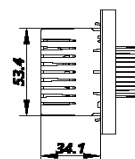
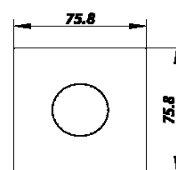
### Basic Information

Model no	70E102
Range	i7
Type	Control
Finishing	white, champagne-46, grey-61, black-26



### Installation and maintenance

Cable section admitted	1 - 4mm <sup>2</sup>
Connection terminals type	Screw connection
IP protection	IP20
Material	PC (polycarbonate)
Operating temperature range	0 - 40°C
Installation type	Suitable for flush mounting box (76 type if multigang frame)



## Additional information

Quantity per box	<i>8</i>
Box size(mm)	<i>250×180×103</i>
Quantity per carton	<i>100</i>
Carton size(mm)	<i>530×370×260</i>

