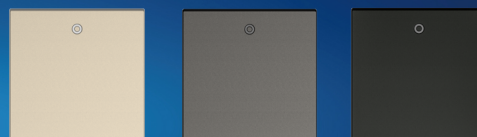


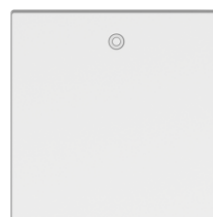
Simon i7

1 Gang 1 Way Switch Module with LED



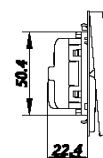
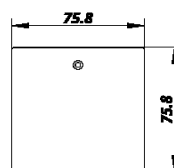
Basic Information

Model no	701013
Range	i7
Type	Switch
Finishing	white,champagne-46,grey-61,black-26



Installation and maintenance

Cable section admitted	1 - 4mm ²
Connection terminals type	Screw connection
IP protection	IP20
Material	PC (polycarbonate)
Operating temperature range	0 - 40°C
Installation type	Suitable for flush mounting box (76 type if multigang frame)



Additional information

Rated current	16AX
Rated voltage	250V
Indicator function	Yes
Quantity per box	10

